



# Fender Flare

## PFFF3001T / PFFF3001S



2004 - 2008: Ford F-150 (exclude flareside models)



TO AVOID BEING SCRATCHED, PLEASE PROTECT THE SURFACE OF THE FENDER FLARE CAREFULLY.



REMOVE CONTENTS FROM BOX. VERIFY ALL PARTS ARE PRESENT.



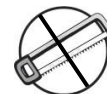
READ INSTRUCTIONS CAREFULLY BEFORE STARTING INSTALLATION.



PLEASE USE SAFETY GLASSES & ENSURE TO BLOCK VEHICLE MOVEMENT DURING INSTALLATION PROCESS



60-180 min



Cutting Not Required



Drilling Required



support@trailfx.com



1 866 638 4870



Limited Lifetime Warranty

**IMPORTANT: DO NOT OVER-TIGHTEN THE MOUNTING SCREWS.**

**OVER-TIGHTENING THE SCREWS WILL RESULT IN STRESS FRACTURES.**

### KIT INCLUDES

Qty	Part Description	Qty	Part Description
2 ea.	Front Flares (A)	8 ea.	Long speed clips (F)
2 ea.	Rear Flares (B)	6 ea.	Medium speed clips (G)
32 ea.	Button head stainless steel bolts (C)	4 ea.	Small speed clips (H)
32 ea.	Nylon Jam Nut (D)	6 ea.	L mounting brackets (I)
1 ea.	Rubber Edge Trim (26 ft.) (E)	19 ea.	8 x 3/4" mounting screws (J)

### TOOLS NEEDED

Stubby Ratchet	Drill and 1/16 drill bit
7/32 socket	Phillips head screw driver
2mm Phillips head bit	Utility knife
13mm socket with extension	4.5mm Hex key

A x 2



B x 2



C x 32



D x 32



E 26 ft.



F x 8



G x 6



H x 4



I x 6



J x 19



## PRIOR TO INSTALLATION

- Read these instructions before beginning the installation.
- Ensure you have the correct TrailFX fender flares for your vehicle before beginning the installation process.  
**NOTE:** The flares are embossed with either a D or P indicating Passenger or Driver. Make sure you match the correct flare to the side of the vehicle you are installing.
- If you plan on painting your fender flares it must be done prior to installation. All surfaces must be cleaned and prepped following the specifications outlined by the paint manufacturer.  
**PLEASE NOTE:** Painted flares cannot be returned.



### STEP 1

#### INSTALLTION OF BUTTON HEAD STAINLESS STEEL BOLTS

Locate the supplied Button head stainless steel bolts (C) and nylon jam nuts (D). Install one Button head stainless steel bolts (C) in one of the holes in the recess of the flares as shown above in the two images. Fig A and B

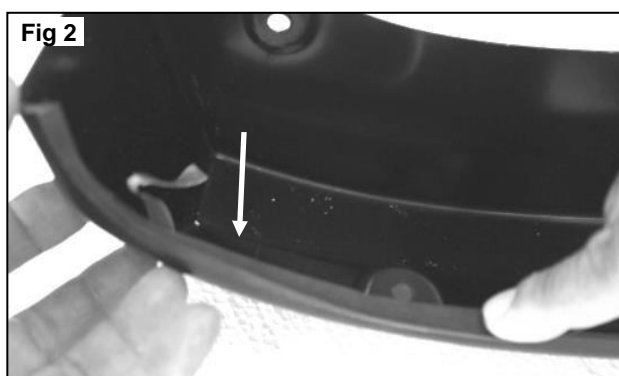
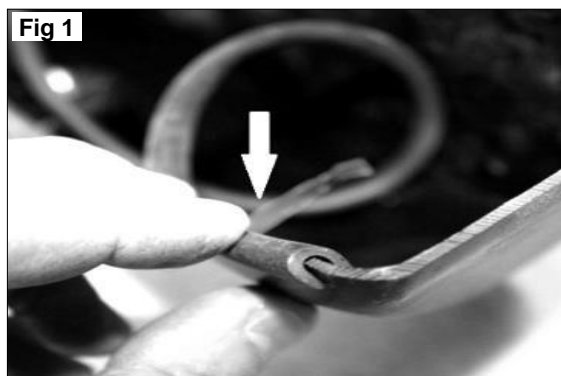
Proceed to the inside of the flare. Place a nylon jam nut (D) on the threads of the Button head stainless steel bolts and tighte Use a 13mm socket with an extension and 4.5 mm Hex key as shown above images Fig C to complete the task.

**Note: These bolts are decorative only and are not intended for securing the flares**

### STEP 2

#### INSTALLING RUBBER TRIM ON NEW FENDER FLARES

1. Locate the supplied "U" shaped rubber trim (E)
2. Starting at one end of the flare, push the rubber trim onto the outside edge only of flare FIG 1.
3. Continue pressing the rubber trim on to the flare in 6" increments. FIG 2
4. Repeat steps 2 and 3 until you have gone completely around the flare. Once you master the technique it will proceed quickly.
5. Repeat this process for the remaining flares.



## INSTALLING FRONT FENDER FLARES

### Step 1

#### Supplied Mounting Bracket Installation

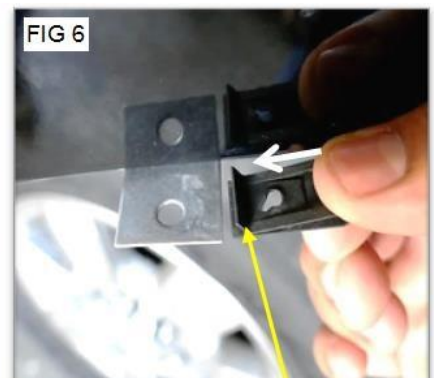
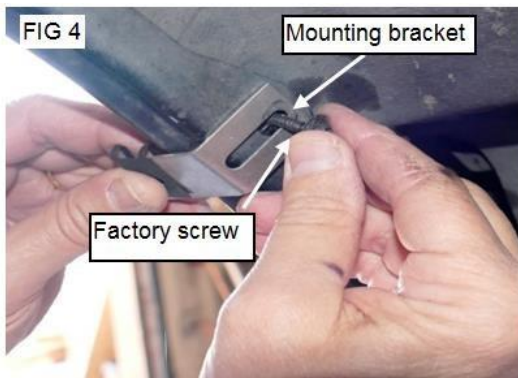
- Locate four factory screws on the inner wall of the wheel well lip. Fig. 1,2 and 3
- Using a 7/32 socket remove and set aside these two screws Fig 1 & 2.
- Using a 7/32 socket remove two factory screw located at bottom front of wheel well. Fig. 3



### Step 2.

#### Slide a factory screw removed in step one through the slot on a supplied mounting bracket (I). Fig. 4

- Start the screw into the one of the factory holes and using a 7/32 socket tighten the screw unit the bracket is securely mounted. Fig. 5 (Do Not Over tighten screw)
- Install the other mounting bracket in the other factory hole by repeating steps above.
- Once all the brackets are securely installed, locate a supplied medium speed clip (G) and press the clip onto the mounting brackets. Center the hole in the clip with the hole in the bracket. FIG 6



Note: Place speed clip with the bent edge facing up



## INSTALLING FRONT FENDER FLARES

### Step 3.

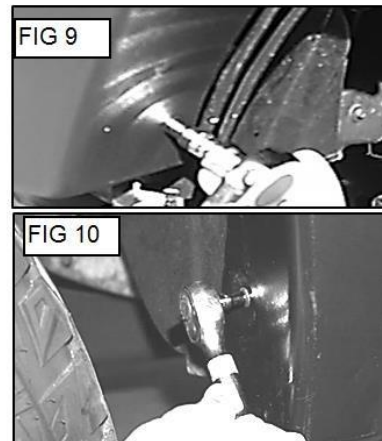
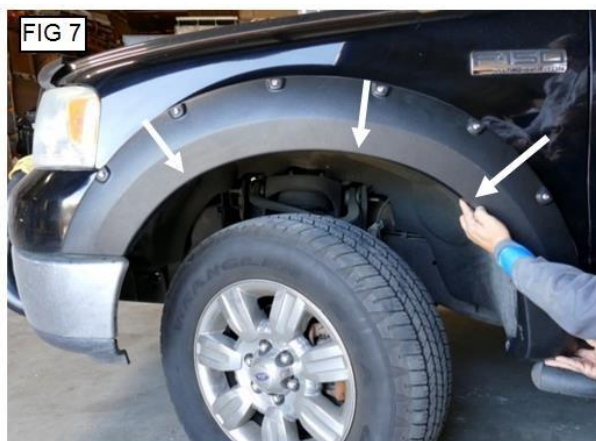
Push back the wheel well liner and slide a supplied small speed clip (H) over the factory hole on the center tab as shown below. Repeat step 2 for installing supplied mounting bracket (I).



### Step 4.

**Place front flare (A) against fender. Align the holes in the flares with the holes in the mounting brackets. Fig 7**

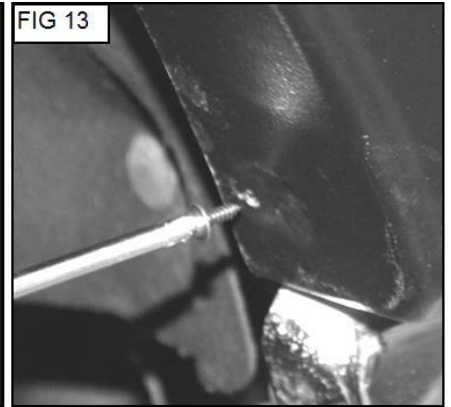
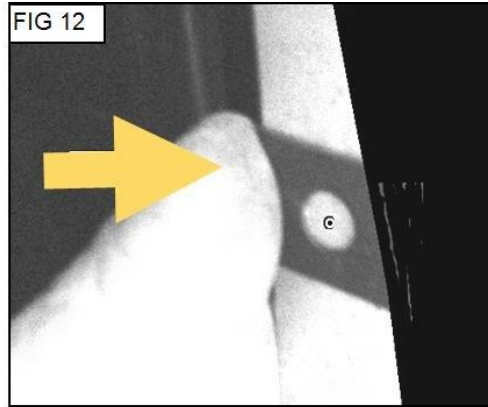
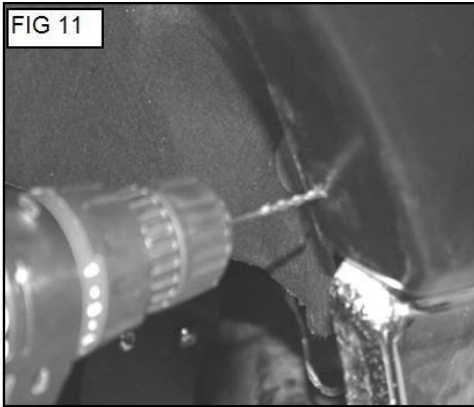
- Using a 2mm Phillips screw driver proceed to install 3 supplied 8 x 1/2" mounting screws (J) through the flare and into the speed clips on the mounting brackets. Fig 8
- Using a 7/32 socket re-install the two factory screws (removed in step 1 ) Fig 10



### Step 5.

**Locate the pilot hole in the front of the flare. Using the pilot hole as a guide drill a hole in the plastic Bumper cap with a drill and 1/16 drill bit. Fig 11**

- Push flare aside and slide a supplied small speed clip (H) over the hole. Fig 12
- Release and adjust flare until the hole in flare is centered over the speed clip.
- Using 2mm Phillips screw driver Install a supplied 8 x 3/4" mounting screw. Fig 13  
DO NOT OVERTIGHTEN SCREW.
- Repeat steps 1 through 6 for the other side.

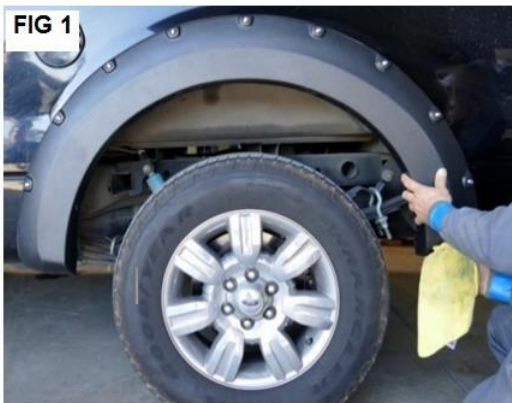


## INSTALLING REAR FENDER FLARE

### Step 1

Have an assistant place the rear flare (B) on the fender. Adjust the flare for best fit. Fig 1

- Using the pilot holes in the flare as a guide place a mark on the lip of the wheel well. Fig 2



### Step 2.

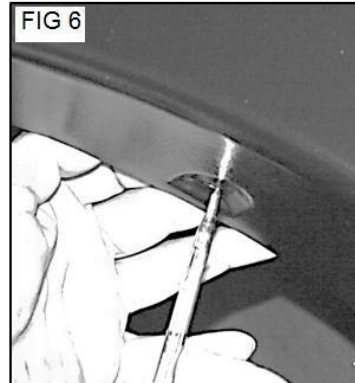
Remove the flare and set aside in a protected area to avoid scratching the surface.

- Place a piece of masking tape on the wheel well lip fig 3 over the marks you made in step 1 above. Fig 2
- Slide a supplied Long speed clip (F) over the taped areas. Fig 4



**Step 3.****Place the rear flare (B) back on the fender. Fig 5**

- Reach under the wheel well and adjust the long speed clip (F) installed in step 2 above until the hole in the flare lines up with the hole in the speed clip. *Tip.* Insert a punch into the hole in the flare to help center the speed clip. Fig 6
- Firmly push the flare against the fender and install one supplied #8 x 3/4" mounting screw (J) through the flare and into the speed clip. Do not fully tighten screw at this time. Fig 7
- Repeat this process for the other holes in the flare always putting pressure against the flare when installing the mounting screw.
- Once all screws have been installed proceed to tighten all screws showing care not to over tighten.



**PRODUCT CARE**

1. Periodically check the product to ensure all fasteners are tight and components are intact.
2. Regular waxing is recommended to protect the finish of the product.

**FAQ's**

1. **Fender flares are loose after installation.**  
*Please ensure that all required mounting brackets / hardware's are installed & tighten correctly.*
2. **Missing / Excess Hardware.**  
*Re-check hardware count as per the part list.*

Check out these other TrailFX Products!!

www.TrailFX.com



FULL FRONT REPLACEMENT BUMPER



REAR REPLACEMENT BUMPER



3.5 INCH OVAL BULL BAR



6" OVAL BENT STEP BAR

Keystone Automotive Operations Inc. (KAO) warrants this product to be free of defects in material and workmanship at the time of purchase by the original retail consumer. KAO disclaims any other warranties, express or implied, including the warranty of fitness for a particular purpose or an intended use. If the product is found to be defective, KAO may replace or repair the product at our option, when the product is returned prepaid, with proof of purchase. Alteration to, improper installation, or misuse of this product voids the warranty. KAO's liability is limited to repair or replacement of products found to be defective, and specifically excludes liability for any incidental or consequential loss or damage.